



# Program Integration and Targeted Integrated Planning:

Ed Cardinal, and Stephanie Jackson  
Whitefish Lake Band Administration

There is an old axiom that says

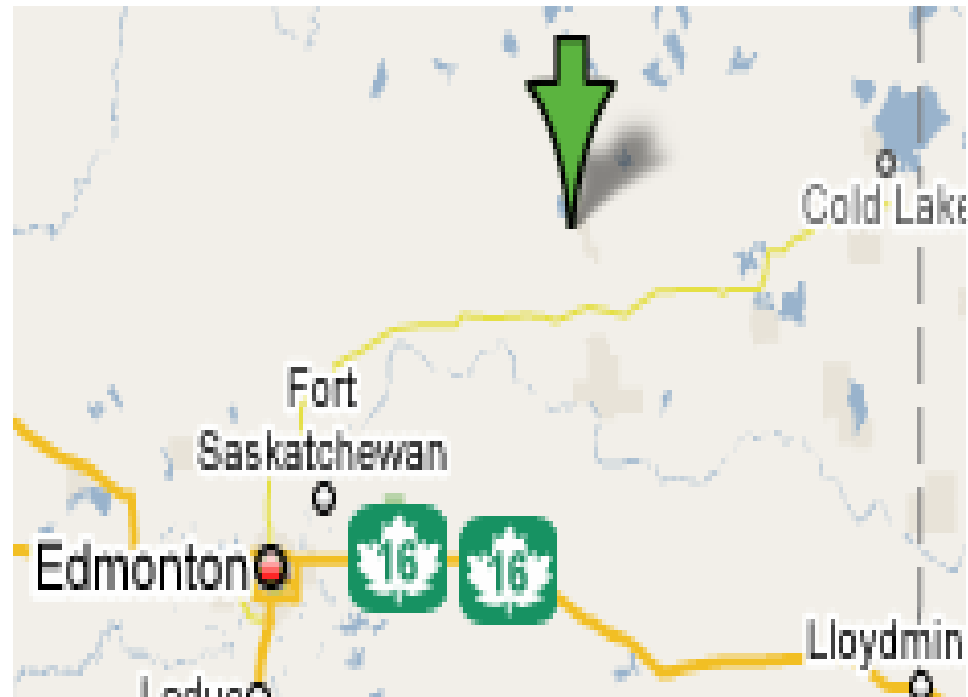


*Whitefish Lake*  
FIRST NATION #128

**“Failing to plan is  
planning to Fail”**

# Foreward

- The whitefish lake first nation is located approximately 220 kilometers northeast of Edmonton, Alberta.



# Background



- Targeted Integrated Planning

*Whitefish Lake*  
**FIRST NATION #128**

---

- We have devised an annual strategic plan to undertake lateral planning and maximizing our fiscal resources to meet our objectives



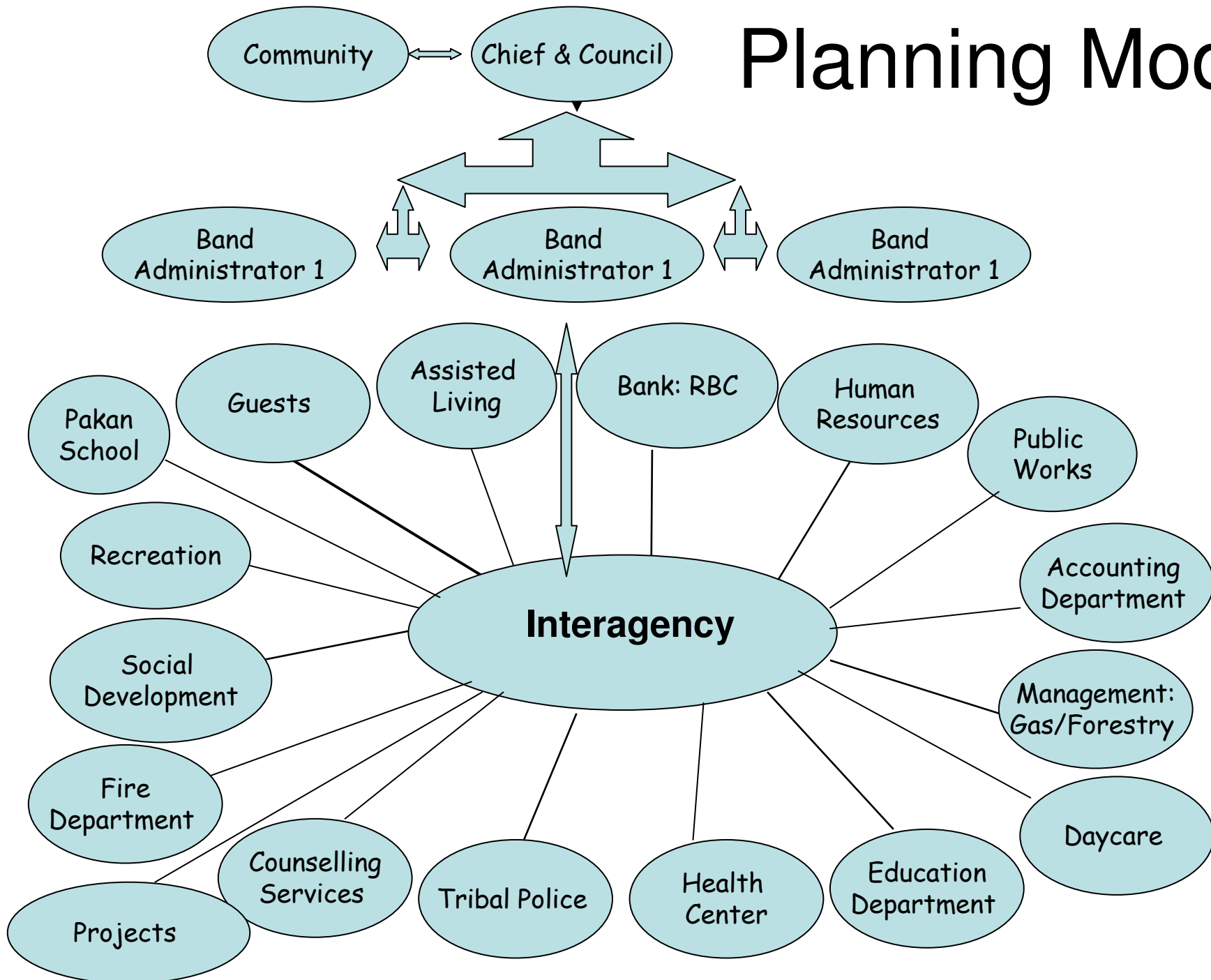
**FIRST NATION #128**

---

# Old Planning Model



# Planning Model



# Demographics

- Population: 1235 living on reserve
- Dwellings: 360
- The median age: 21.3

*Statistics Canada. 2008. Whitefish lake 128, Alberta. Aboriginal Population Profile. 2006 Census*

Age	Number of:
0 to 4	135
5 to 9	155
10 to 14	160
15 to 19	135
20 to 24	85
25 to 29	105
30 to 34	75
35 to 39	80
40 to 44	65
45 to 49	65
50 to 54	55
55 to 59	40
60 to 64	25
65 to 69	25
70 to 74	20
75 plus	0
	1225

# Integrated Planning

- Social Program and Development
- Stats (Currently we have the 3<sup>rd</sup> lowest dependency rate on social programs in AB First Nations)
- Reduction of Dependency in Social Development Program
- Mobilizing our work force into the Oil and Gas Sector and Forestry Industry

Wapiti Lake  
FIRST NATION #128

# Integrated Planning Cont'd

- Whitefish Lake FN has implemented these principles to advance other Capital Projects which I will discuss later in the presentation

# Youth Skills Development

- Since most of our community members are employed off reserve, we have begun to address the employment and educational needs of our youth with multiple barriers
- This project has involved 2 years of intense negotiations again, we instituted a partnership approach by bringing the nation, INAC, Service Canada, Portage College and AEII to the table

# Youth Skills Development Cont'd

- Through this collaborative and partnership, we were able to procure almost 400k for this program for this fiscal year.
- We expect this to be a multi-year undertaking.
- Currently, we have 18 participants in this program.
- The fundamental underpinings of this program is that we will provide: case management and aftercare to our clients to provide a seamless integration into the labor force or mainstream academics

# Parks Canada

- In 2006, we assembled several National Parks superintendants to meet with the RDG west of Parks Canada in Calgary.
- We presented them with a ppt, we believe that we made a significant impact in our presentation.
- Because in April 2008, we received a call letter awarding us a contract to work within the Parks.
- We anticipate sending 2 crews to work in a designated Park in April 2009.

# Lagoon

- Currently we have major environmental issues related Waste Water mgmt.
- To address this, we assembled a partnership approach with INAC, HC, and our Circuit Rider to come up with some medium and long term solutions
- On Monday, I was informed by INAC that they have committed to the following:
  - Shock and Release treatment of our lagoon to increase capacity as a medium term solution
  - Also engaged in feasibility study to look at various options and long term solutions to build a new lagoon
  - Resourced for portable RBC



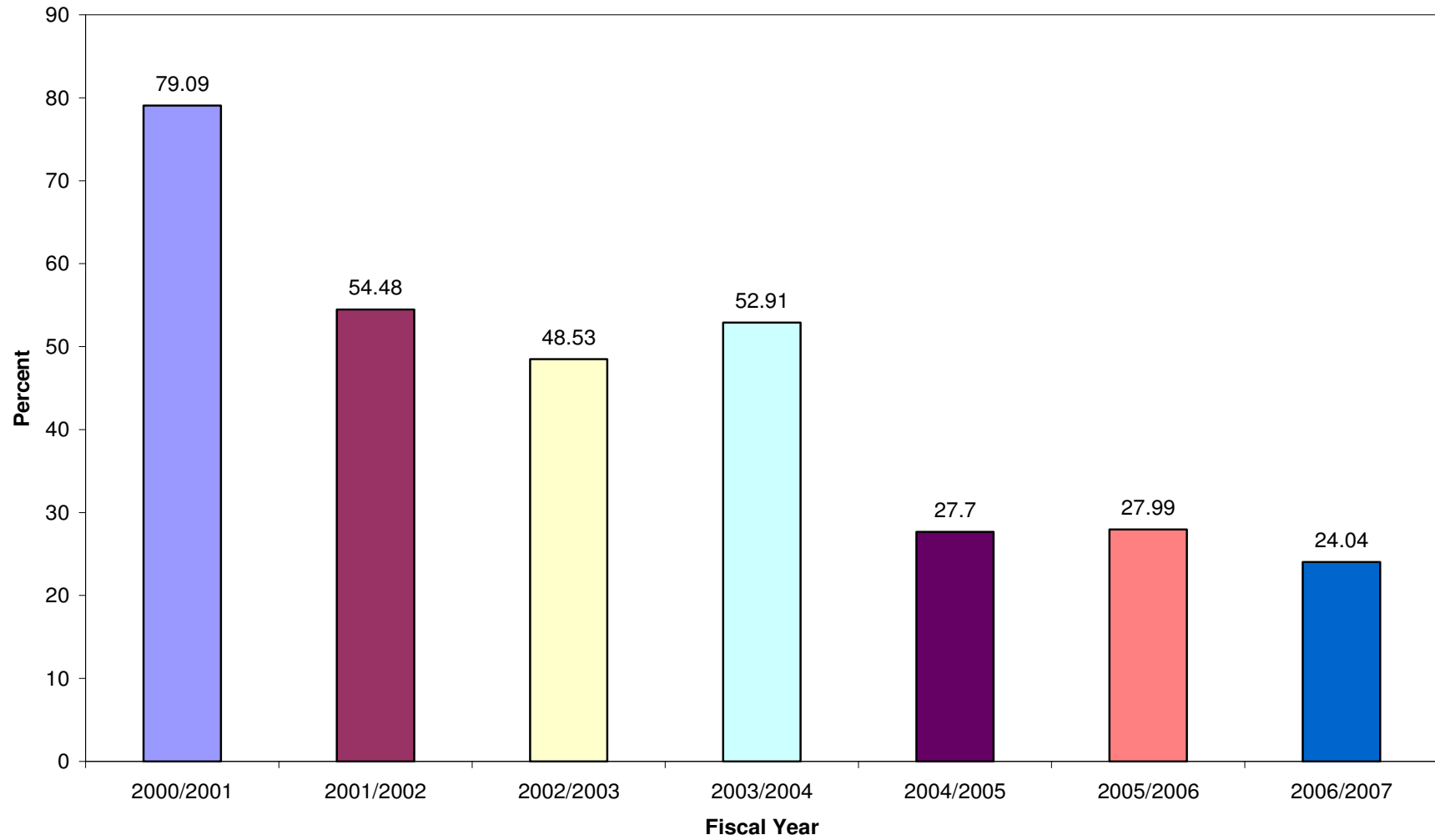
Portage College  
Alberta HRE  
First Nations Forestry Program #128

INAC

Service Canada



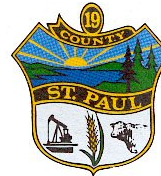
### Whitefish Lake Band #128 Income Support Dependency



# Regional Partnership Initiative



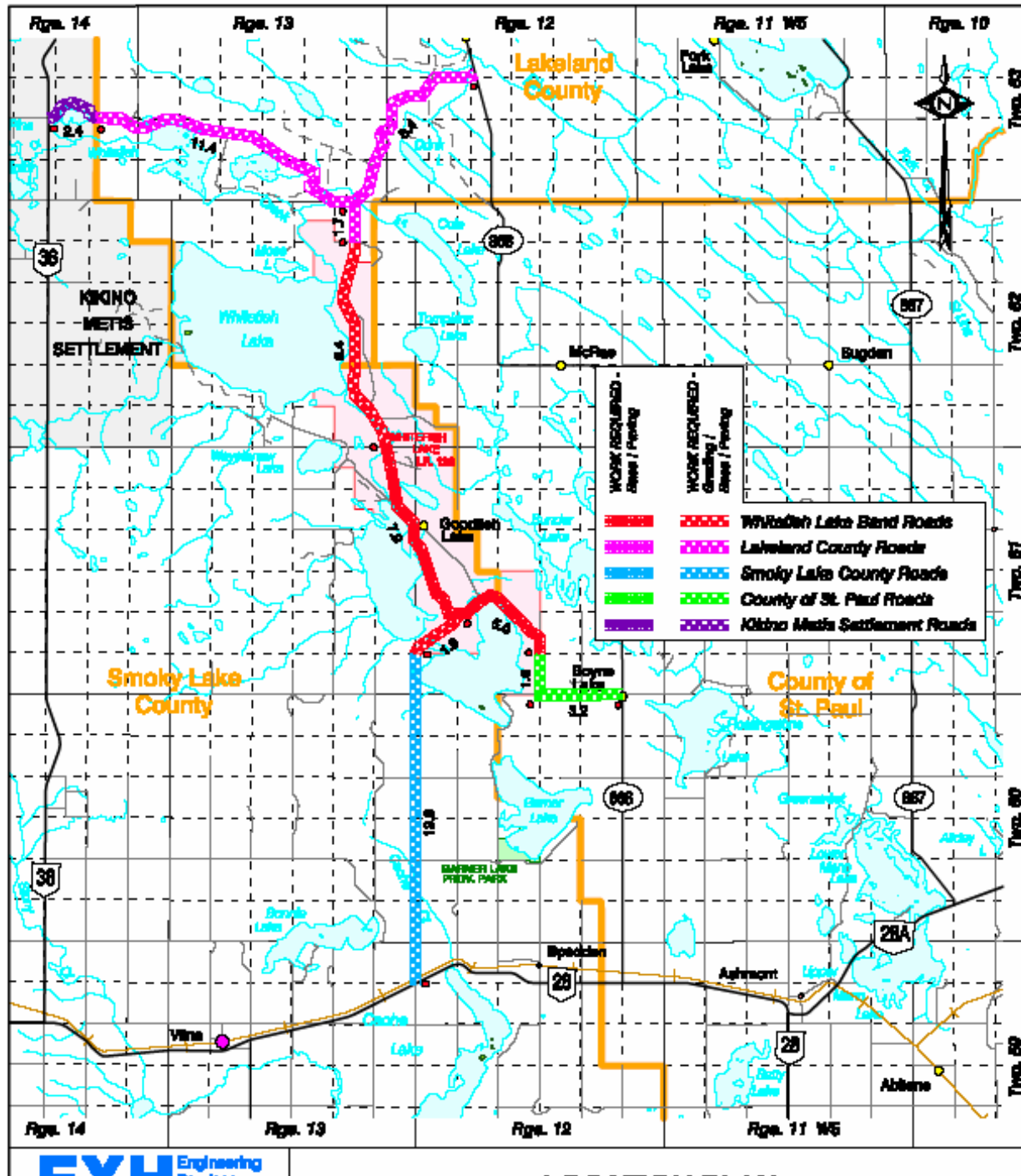
# Regional Partnership Initiative



# Regional Partnership Initiative

## A Comprehensive Roads Program

- Introduced the collaborative and partnership concept to the representatives of our surrounding County jurisdictions
- We have brought them to the table to set strategic directions & to develop and sign a MOU
- The total scope of this project is 54 Million
- To Asphalt pave 17 km of our arterial roads is in the proximity of 10 Million
- We have had some exploratory discussions at the Ministerial table and expect them to continue



# Regional Partnership Cont'd

- To date, St. Paul County has already paved an important access road to our community
- We expect to commence paving our roads in the next fiscal year 2009/2010
- That my friends is “snapshot” of Whitefish Lake’s planning framework \*\*
- On a final note, we have been commissioned by Chief & Council to copyright our social dev’t integrated planning model, our youth skills dev’t program, and our daycare program & our regional roads partnership initiative



**Wet Weather**

**Dry Weather**



# Questions?

Thank – you!!

Ed Cardinal

(780) 636-7010

Cell: (780) 614-8931

E-mail: [ecardinal@wfl128.ca](mailto:ecardinal@wfl128.ca)